



Sindaco | Guido **Tendas**
Assessore all'Urbanistica | Filippo **Uras**
Dirigente - RUP | Giuseppe **Pinna**

Massimo **Carta**
Enrica **Campus**
Alberto **Loche**
Giuseppe **Loche**
Stefania **Rizzotti** (LDP Studio)
Emanuele **Tendas**

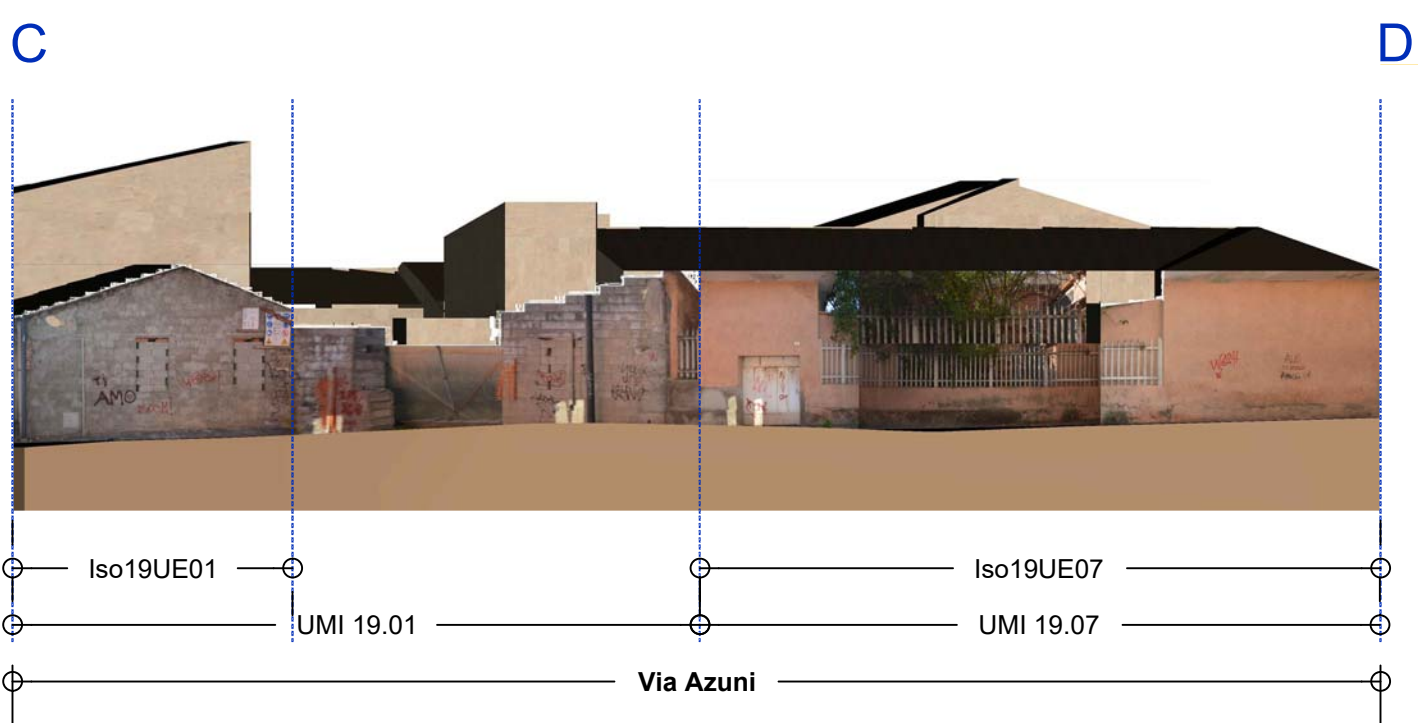
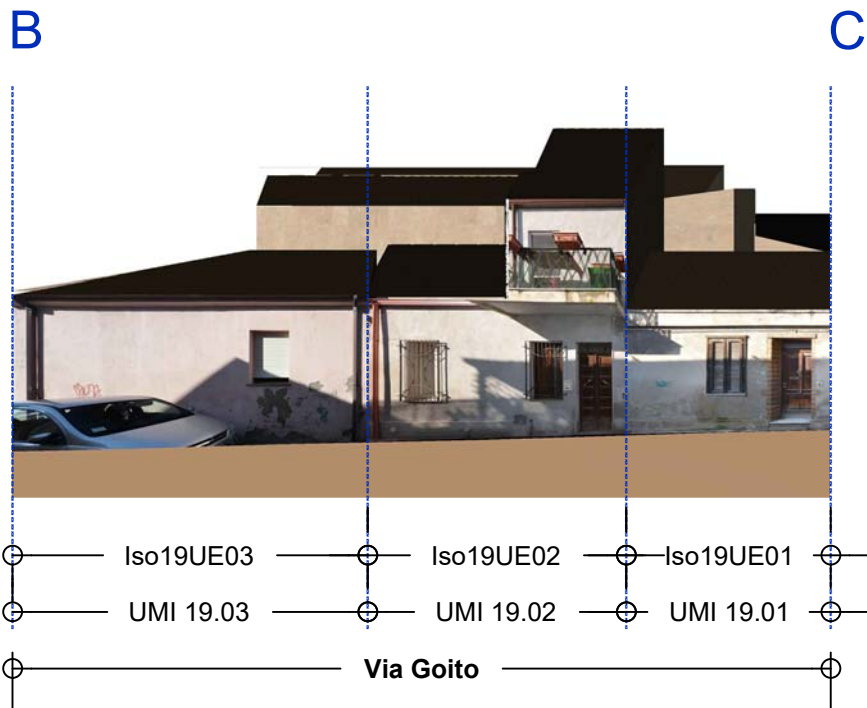
sistema informativo
Luca **Gentili** (LDP Studio)

assetto storico-culturale
Silvia **Oppo**

Grazia Busio
Giorgio Marongiu
Claudia Meli
Claudia Pintor

assetto economico
Paola Perseu

Comune di Oristano
Settore Sviluppo del Territorio



Superficie Totale (mq)	1139.00
Superficie Coperta (mq)	654.49
Superficie non Coperta (mq)	484.51
Volume Totale (mc)	2713.92
Altezza massima (m)	6.38

An aerial photograph of a residential neighborhood. The image shows a grid of streets with houses featuring terracotta roofs. A central street runs diagonally from the bottom left towards the top right. To the left of this street, there is a large green tree and a white car parked on the side. To the right, there are several cars parked along the street, including a red one and a blue one. The houses are closely packed, and the overall scene depicts a typical urban or suburban residential area.

Elaborazione rilievo fotografico, restituzione fronti, dati numerici
Compucart, 2012
Restituzione grafica: G. Busio, G. Marongiu, C. Pintor, 2015